

SILVERLENS

COLLECTORS PLUS

LESLIE DE CHAVEZ | DINA GADIA | MIT JAI INN | POW MARTINEZ
WAWI NAVARROZA | GINA OSTERLOH | BERNARDO PACQUING | GARY-ROSS PASTRANA
HANNA PETTYJOHN | ISSAY RODRIGUEZ | RYAN VILLAMAE



SILVERLENS

COLLECTORS PLUS

LESLIE DE CHAVEZ | DINA GADIA | MIT JAI INN | POW MARTINEZ
WAWI NAVARROZA | GINA OSTERLOH | BERNARDO PACQUING | GARY-ROSS PASTRANA
HANNA PETTYJOHN | ISSAY RODRIGUEZ | RYAN VILLAMAEAL

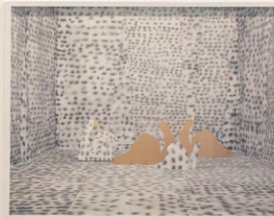
6 – 22 October 2022

email

website

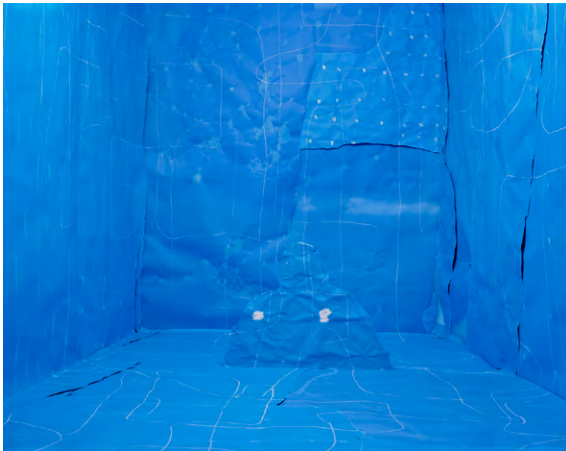
whatsapp







double figures, 2011
Archival Pigment Print
11.50h x 14.50w in · 29.21h x 36.83w cm
Edition 1 of 3



single figure, 2011
Archival Pigment Print
11.50h x 14.50w in · 29.21h x 36.83w cm
Edition 1 of 3

[email](#)

[whatsapp](#)



Split Copy (Body Prop), 2010
lightjet (c-print)
7.99h x 10w in - 20.30h x 25.40w cm
Edition 1 of 3



Rear Peace, 2010
lightjet (c-print)
7.99h x 10w in - 20.30h x 25.40w cm
Edition 1 of 3



Empty (Body Prop), 2010
lightjet (c-print)
7.99h x 10w in - 20.30h x 25.40w cm
Edition 1 of 3

[email](#)

[whatsapp](#)



Analog Code for Unstable Viewing, 2010
Archival Pigment Print With UV Laminate
8h x 10w in · 20.32h x 25.40w cm
Edition 1 of 3



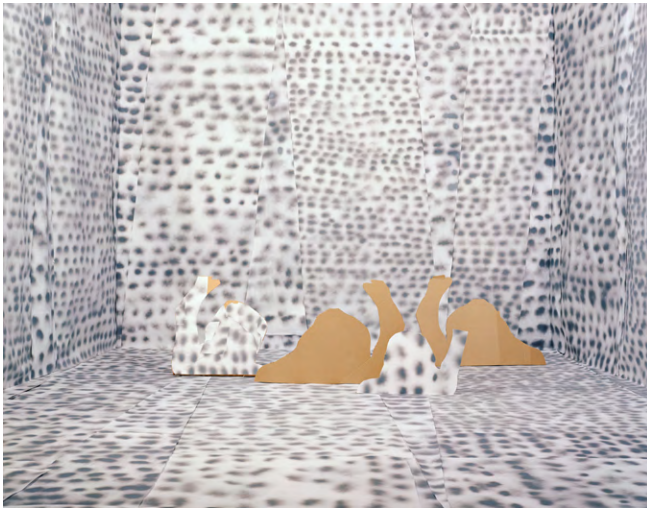
Bruise Points and Other Infinite Pricks, 2010
Archival Pigment Print With UV Laminate
8h x 10w in · 20.32h x 25.40w cm
Edition 2 of 3



Wide Group Dynamic, 2010
Archival Pigment Print With UV Laminate
8.50h x 11w in · 21.59h x 27.94w cm
Edition 1 of 3

[email](#)

[whatsapp](#)



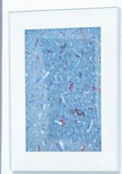
Collapse #2, 2010
Archival Pigment Print With UV Laminate
20.47h x 26.30w in • 52h x 66.80w cm
Edition 2 of 3



Small Group Dynamic, 2010
Archival Pigment Print With UV Laminate
11h x 14.50w in • 27.94h x 36.83w cm
Edition 1 of 3

email

whatsapp





Psychedelic 2, 2020
oil on canvas
48h x 48w in · 121.92h x 121.92w cm

[email](#)

[whatsapp](#)



RYAN VILLAMAEL



Epilogue III, 2021

paper

15.50h x 10.50w x 7.75d in

39.37h x 26.67w x 19.69d cm

[email](#)

[whatsapp](#)

RYAN VILLAMAEL



Epilogue IV, 2021

paper

16h x 17w x 11.75d in

40.64h x 43.18w x 29.85d cm

[email](#)

[whatsapp](#)

RYAN VILLAMAEEL



Epilogue VII, 2021

paper

19h x 14w x 10d in

48.26h x 35.56w x 25.40d cm

[email](#)

[whatsapp](#)

RYAN VILLAMAEEL



Index 19, 2022
archival print on paper, book
17.13h x 9.33w x 9.33d in
43.50h x 23.70w x 23.70d cm

email

whatsapp

LESLIE DE CHAVEZ



God is on our Side, 2013

oil on canvas

74.80h x 94.49w in • 190h x 240w cm

[email](#)

[whatsapp](#)

BERNARDO PACQUING



"Untitled # 3"

After J.S. Bach's Partita No. 2 "Chaconne", 2019
assemblage

39.50h x 60w x 32d in

100.33h x 152.40w x 81.28d cm

[email](#)

[whatsapp](#)



DINA GADIA



The Great Trendkill Display, 2011
acrylic on canvas
72h x 96w in · 182.88h x 243.84w cm

email

whatsapp

ISSAY RODRIGUEZ



Notes on Dracaena braunii (8 stalks for growth), 2021
cyanotype on paper
22h x 30w in • 55.88h x 76.20w cm

[email](#)

[whatsapp](#)



untitled (UV box experiments), 2021
solar dye and cyanotype on paper
14.17h x 35.83w in • 36h x 91w cm

[email](#)

[whatsapp](#)



untitled (manaog ka irog), 2021
cyanotype on paper
15h x 10w in · 38.10h x 25.40w cm

untitled (oxalis triangularis), 2021
cyanotype on paper
15h x 10w in · 38.10h x 25.40w cm

[email](#)

[whatsapp](#)



Psychedelic 5, 2020

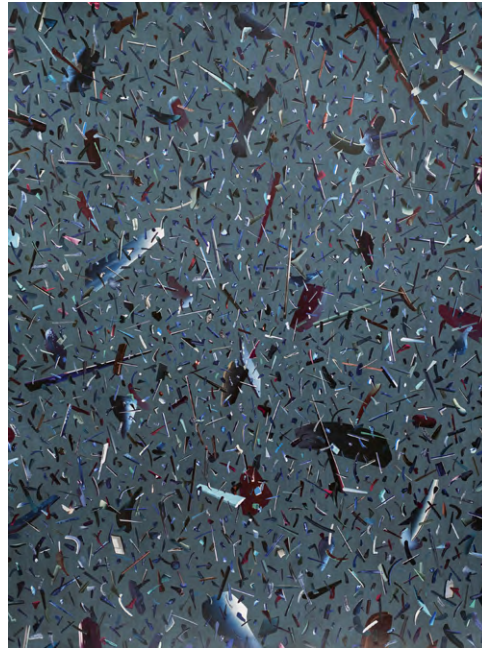
oil on canvas

48h x 48w in · 121.92h x 121.92w cm

[email](#)

[whatsapp](#)

GARY-ROSS PASTRANA



Where Broken Parts Go 1, 2019
collage
40h x 30w in • 101.60h x 76.20w cm

Where Broken Parts Go 3, 2019
collage
40h x 30w in • 101.60h x 76.20w cm

email

whatsapp





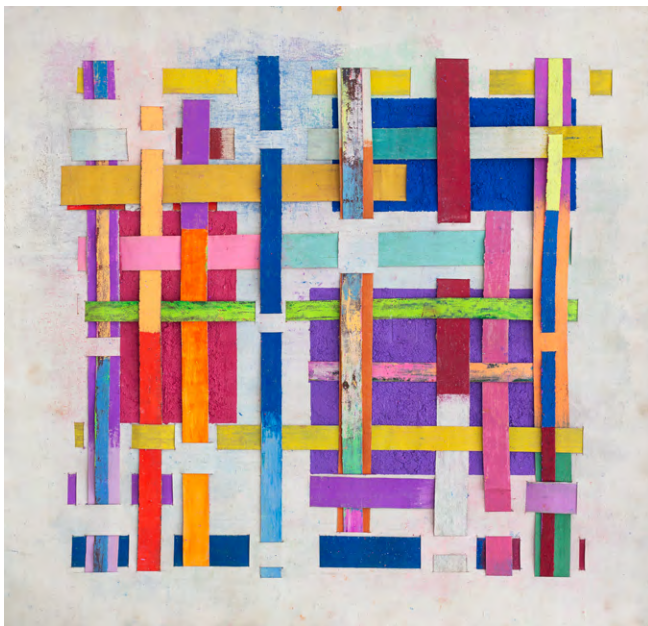
WVB1, 2022

manila rope and acrylic with water-based pigment on canvas

120.47h x 79.13w x 2.36d in • 306h x 201w x 6d cm

email

whatsapp



AT 17, 2020
oil on canvas
39.37h x 39.37w in · 100h x 100w cm

[email](#)

[whatsapp](#)

POW MARTINEZ

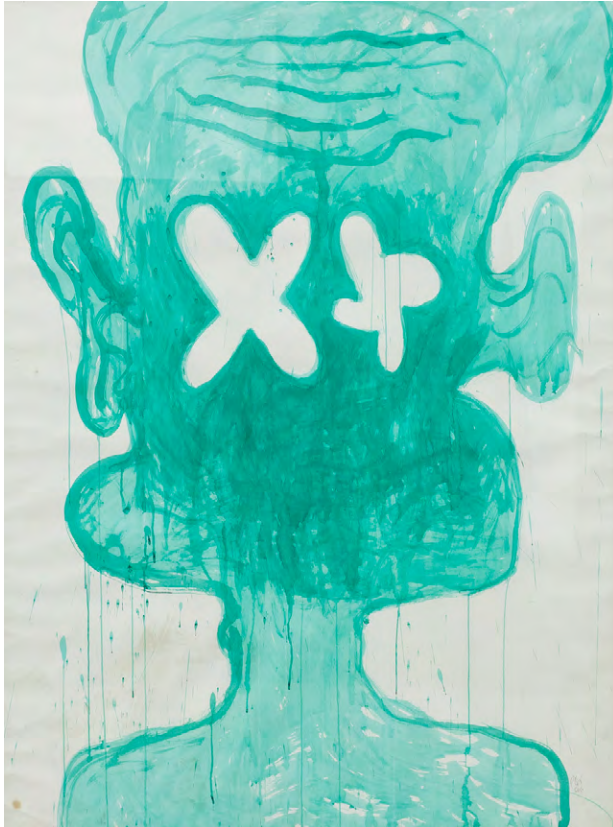


Pingpong, 2021
oil on canvas
72h x 72w in • 182.88h x 182.88w cm

[email](#)

[whatsapp](#)

POW MARTINEZ



hollow man 1, 2015

ink on paper

63.58h x 50.59w in - 161.50h x 128.50w cm

email

whatsapp

POW MARTINEZ



hollow man 3, 2015

ink on paper

54.43h x 50.49w in • 138.25h x 128.25w cm

email

whatsapp

POW MARTINEZ



hollow man 2, 2015

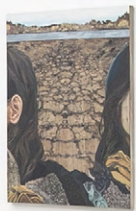
ink on paper

58.86h x 50.39w in • 149.50h x 128w cm

email

whatsapp





HANNA PETTYJOHN



Foreground C (HP/W V), 2017

oil on canvas

72h x 54w in • 182.88h x 137.16w cm

[email](#)

[whatsapp](#)

HANNA PETTYJOHN



Witherlands III (HP), 2016

oil on canvas

72.50h x 54w in · 184.15h x 137.16w cm

[email](#)

[whatsapp](#)

HANNA PETTYJOHN



(A/P.12), CK (Calamba Kaolin), 2021
oil on canvas
48h x 24w in • 121.92h x 60.96w cm



(A/P.14), CK (Calamba Kaolin), 2021
oil on canvas
48h x 24w in • 121.92h x 60.96w cm

[email](#)

[whatsapp](#)

HANNA PETTYJOHN



Relative/Humidity (II), 2019

oil on canvas

60h x 48w in • 152.40h x 121.92w cm

[email](#)

[whatsapp](#)



Anastomosis (P.06), 2020

oil on canvas

48h x 24.25w in • 121.92h x 61.60w cm

[email](#)

[whatsapp](#)



The Fire You're Made Of

(Ignis Mirabilis, Self-Portrait After the Fire), 2019

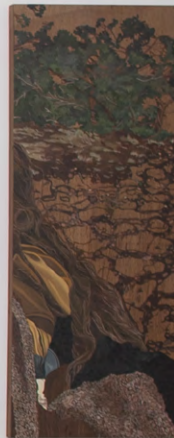
archival pigment print on Hahnemühle, cold-mounted on acid-free aluminum, with artist's exhibition frame i.e. double wood frame custom-tinted to WN skin tone

53.30h x 40w in · 135.38h x 101.60w cm

Edition 1 of 5

[email](#)

[whatsapp](#)



**LESLIE DE CHAVEZ, DINA GADIA, MIT JAI INN, POW MARTINEZ, WAWI
NAVARROZA, GINA OSTERLOH, BERNARDO PACQUING, GARY-ROSS
PASTRANA, HANNA PETTYJOHN, ISSAY RODRIGUEZ, AND RYAN VILLAMAEI**

Copyright © Silverlens Inc. 2022

All rights reserved.

No part of this publication may be reproduced, stored in a retrieval system or transmitted in any form or by any means, electronic or otherwise, without the prior written consent of the above mentioned copyright holders, with the exception of brief excerpts and quotations used in articles, critical essays or research.

Text © Silverlens Inc. 2022

All rights reserved.

No part of this essay may be reproduced, modified, or stored in a retrieval system or retransmission, in any form or by any means, for reasons other than personal use, without written permission from the author.

SILVERLENS

2263 Don Chino Roces Avenue Extension

Makati City, Philippines 1231

T +632.88160044

F +632.88160044

M +63917.5874011

www.silverlensgalleries.com

