

# IN MEDIAS RES

HANNA PETTYJOHN



**SILVERLENS**

IN MEDIAS RES  
HANNA PETTYJOHN

5 TO 23 DECEMBER 2020





Our life journeys are mapped like branches of memory and information coming together, as depicted in a beautiful new series of artworks by Hanna Pettyjohn. Her new exhibition *In Medias Res* at Silverlens Gallery references the retelling of her own history, creative process, and the passage of time through a collection of paintings, each titled “*Anastomosis*.” In this exhibition, Pettyjohn reticulates the past and present in each painting through the representation of a universal landscape.

*In Medias Res* captures a visual expression of Pettyjohn’s quest to be in the midst of things by merging her creative process as a metaphor to reveal hidden truths. She begins her process by selecting elements from Photoshop layers from what she calls the mother painting, previously seen in her 2019 exhibition *Concurrencies*. These exposed past layers are then translated for each of her *Anastomosis* paintings which refer to the point of origin of a memory. This concept is used to reference her past works as the departure point for this new series of works. The paintings feature abstracted landscapes consisting of a lake shoreline, debris covering the shore, and hints of the human presence. The muted color palette produces a feeling of sentimentality for this place which contains evidence of lived experiences. The landscape features various elements of nature and man-made objects, such as fabrics, tarps, and construction rubble.

Wandering through this shoreline, one finds a recollection of past journeys through objects observed in the debris. In this case, it is the natural landscape filled with representations of fabric materials

to symbolize the idea of home, the migration experience, and memory. The references of fabrics depicted in these artworks seem to be recurring characters in her story, encapsulating this idea of “anastomosis.” In other words, finding the connections between these objects and our personal history can show the continuing journey of self-discovery. More importantly, it becomes the consequence of our human condition to search for our own truth.

Altogether, the application of a previously used digital process to create the meticulously painted artworks presented in this exhibition invokes a metaphor for self-reflection. *In Medias Res*, thus, becomes the process of deconstructing an image and reshaping it in different ways to depict the memory of Pettyjohn’s homeland in the Philippines and the passage of time. This abstraction of the environment and the leftover rubble of objects left behind serves as a testament to our existence.

The exhibition is an installation comprising nine paintings and nine sculptures are displayed for the public to encounter a physicality to the narrative of Pettyjohn’s landscapes. The sculptural porcelain pieces are created with fabric that was dipped in casting slip and later high fired in a kiln. The result emphasizes the concept of memory as all fabric material is burned, changing the materiality of them into ceramic sculptures. These objects are set on top of two large tables placed in front of the paintings creating the point of origin that connects Pettyjohn’s landscapes.

- Karla García







*The Mother (A/HP, Ground/Foreground)*, 2020

oil on canvas

54h x 96w in • 137.16h x 243.84w cm

[inquire](#)

[book an appointment](#)









*Anastomosis (P.10)*, 2020  
oil on canvas  
48h x 24.25w in • 121.92h x 61.59w cm

[inquire](#)

[book an appointment](#)







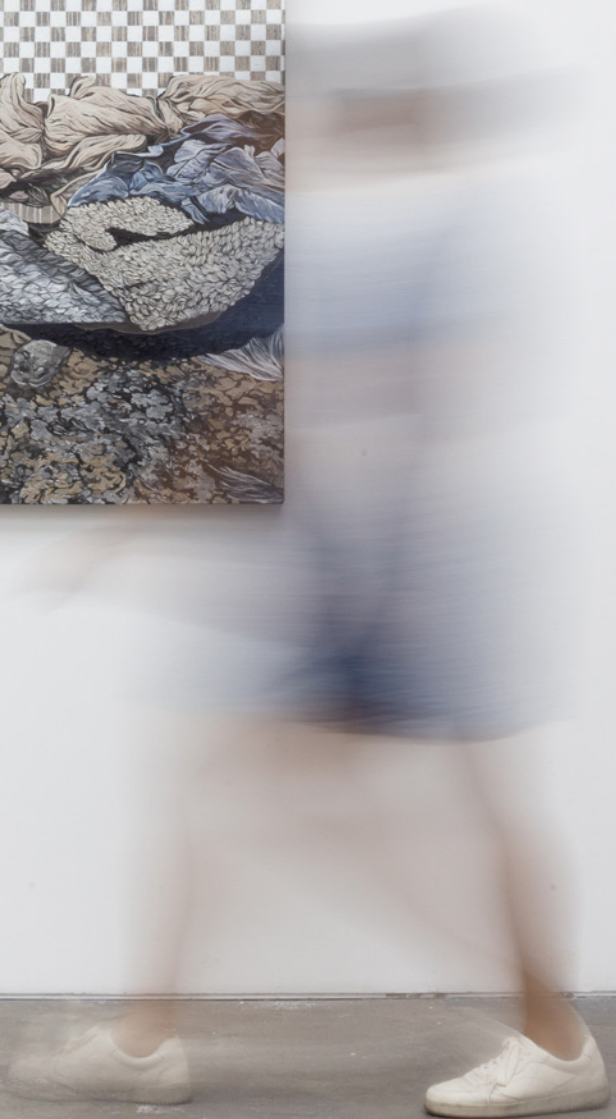


*Anastomosis (P.04)*, 2020  
oil on canvas  
48h x 24.25w in • 121.92h x 61.59w cm

[inquire](#)

[book an appointment](#)









*Anastomosis (P.II)*, 2020  
oil on canvas  
48h x 24.25w in • 121.92h x 61.59w cm

[inquire](#)

[book an appointment](#)







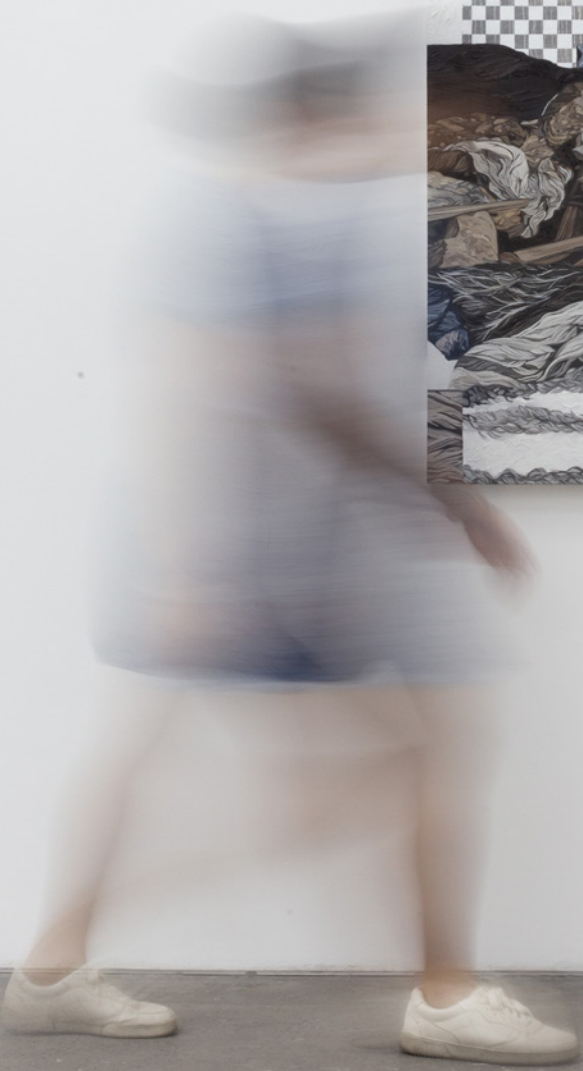


*Anastomosis (P.09)*, 2020  
oil on canvas  
48h x 24.25w in • 121.92h x 61.59w cm

[inquire](#)

[book an appointment](#)











*Anatomosis (P.05)*, 2020  
oil on canvas  
48h x 24.25w in • 121.92h x 61.59w cm

[inquire](#)

[book an appointment](#)









*Anastomosis (P.08)*, 2020  
oil on canvas  
48h x 24.25w in • 121.92h x 61.59w cm

[inquire](#)

[book an appointment](#)









*Anastomosis (P.07)*, 2020  
oil on canvas  
48h x 24.25w in • 121.92h x 61.59w cm

[inquire](#)

[book an appointment](#)









*Anastomosis (P.06)*, 2020  
oil on canvas  
48h x 24.25w in • 121.92h x 61.59w cm

[inquire](#)

[book an appointment](#)











click to  
rotate

*Ground A (DFW/MNL)*, 2020

porcelain

10h x 19.50w x 19.50d in • 25.40h x 49.53w x 49.53d cm

inquire

book an appointment



*Ground (IMR/A i)*, 2020

porcelain

17.50h x 7.50w x 7.50d in

44.45h x 19.05w x 19.05d cm

[inquire](#)

[book an appointment](#)



click to  
rotate





*Ground (IMR/A ii)*, 2020

porcelain

7.50h x 21w x 8.50d in • 19.05h x 53.34w x 21.59d cm

[inquire](#)

[book an appointment](#)



*Ground (IMR/A iii)*, 2020  
porcelain  
6h x 7w x 7d in  
15.24h x 17.78w x 17.78d cm

[inquire](#)

[book an appointment](#)



click to  
rotate



*Ground (IMR/A iv)*, 2020  
porcelain  
6h x 7w x 7d in  
15.24h x 17.78w x 17.78d cm

[inquire](#)

[book an appointment](#)



click to  
rotate





*Ground (IMR/A v)*, 2020  
porcelain  
6h x 7w x 7d in  
15.24h x 17.78w x 17.78d cm

[inquire](#)

[book an appointment](#)



click to  
rotate



*Ground (IMR/A vi)*, 2020  
porcelain  
5h x 4w x 4d in  
12.70h x 10.16w x 10.16d cm

[inquire](#)

[book an appointment](#)



click to  
rotate





*Ground (IMR/A vii)*, 2020  
porcelain  
6h x 7w x 7d in  
15.24h x 17.78w x 17.78d cm

[inquire](#)

[book an appointment](#)



click to  
rotate



*Ground (IMR/A viii)*, 2020  
porcelain  
5.50h x 4w x 4d in  
13.97h x 10.16w x 10.16d cm

[inquire](#)

[book an appointment](#)

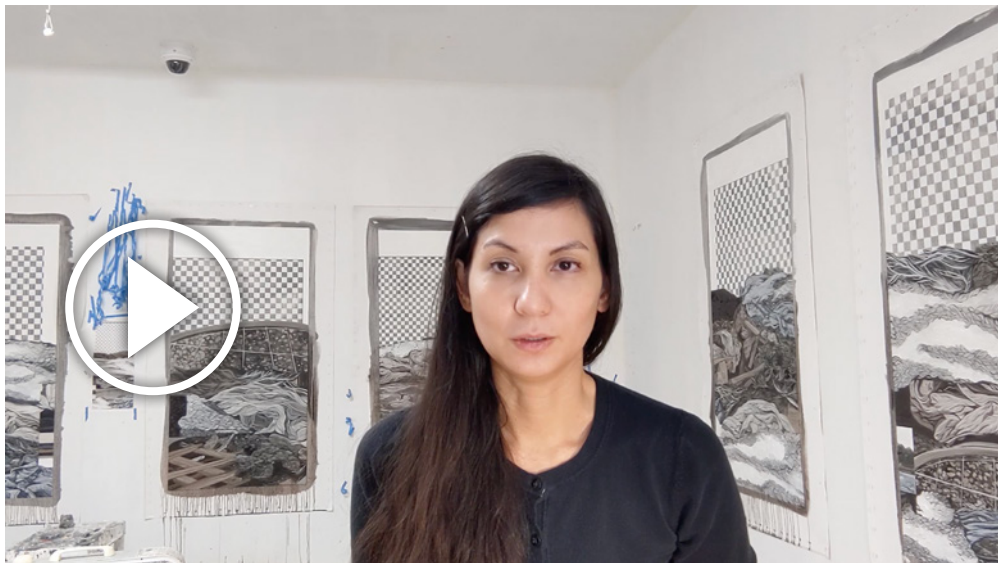


click to  
rotate























## HANNA PETTYJOHN

### Bio

Hanna Pettyjohn (b. 1983, Manila; lives and works in Dallas) graduated from the University of the Philippines Diliman, with a Bachelor of Fine Arts in Painting. The daughter of pioneering contemporary Filipino ceramicists Jon and Tessy Pettyjohn, she combines sculptural installations with paintings in her explorations of identity. Pettyjohn has exhibited in Manila, Miami, Taipei, Singapore, and Hong Kong, and her work forms part of private collections in Southeast Asia.

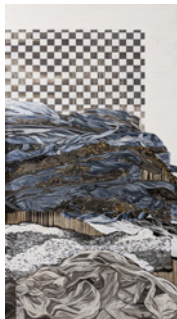
In 2004, Pettyjohn won first prize at the 37th Shell National Students Art Competition. She received the Cultural Center of the Philippines' Thirteen Artists Award in 2015.

A Filipino-American with a transnational narrative, Pettyjohn possesses firsthand knowledge of the global diaspora. Autobiographical details and "fragments of memory" inform her work, which is tinged with both nostalgia and an acute awareness of life's transience. Through her large-scale portraits and personal photographs-turned-tactile landscapes, she conveys the vague anxiety, loneliness, and alienation that afflict the uprooted.



## HANNA PETTYJOHN Bio

b.1983, Manila, PH



*Anastomosis (P. 03), 2020*

### AWARDS

- 2015 Thirteen Artists Awardee, Cultural Center of the Philippines
- 2004 37th Shell National Students Art Competition, First Prize

### SELECTED COLLECTIONS

- Paulino and Hetty Que Collection, Manila
- Mikey & Lou Samson Collection, Singapore
- Michael Rogers Collection, Hong Kong
- Isa Lorenzo and Rachel Rillo Collection, Manila
- Anna Sy Collection, Manila

### SOLO EXHIBITIONS

- 2020 *In Medias Res*, Silverlens, Manila
- 2019 *Concurrencies*, Mind Set Art Center, Taipei
- 2017 *a mantle of*, Silverlens, Manila
- 2015 *A Web of When and Where*, Mind Set Art Center, Taipei
- By Land or By Air*, Silverlens, Manila
- 2013 *Witherland*, Mind Set Art Center, Taipei
- The Glass Between Us*, Silverlens, Manila
- Bundle*, Silverlens, Singapore
- 2011 *Few and Far Between*, Silverlens, Manila
- 2010 *Year of Glad*, Silverlens, Manila
- 2009 *American Sweet*, Silverlens, Manila
- 2006 *The Elaborate Nest Between Child & Breast*, curated by Nilo Ilarde, Mag.net, Quezon City
- A Disheartened Migration From Rejected Relations*, Finale Art File, Manila

### SELECTED GROUP EXHIBITIONS

- 2020 *Anticipating the Day*, Silverlens, Manila
- And Life Goes On*, Mind Set Art Center, Taipei
- Art Fair Philippines*, Silverlens, Manila
- 2019 *Art Fair Philippines*, Silverlens, Manila
- 2018 *Art Fair Philippines*, Silverlens, Manila
- 2017 *Art Basel*, Silverlens, Hong Kong
- Art Fair Philippines*, Silverlens, Manila
- Transloción*, Inaugural Exhibition, Curated by Gary-Ross Pastrana, Silverlens, Manila
- 2016 *Asian Students and Young Artists Art Festival (ASYAAF)*, Dongdaemun Design Plaza, Seoul
- The Road Not Taken - Chapter 2*, Mind Set Art Center, Taipei
- Art Fair Philippines*, Silverlens, Manila
- 2015 *Bazaar Art Jakarta*, Jakarta
- Art Fair Philippines*, Silverlens, Manila
- 2014 *Art Taipei*, Silverlens, Taipei
- Art Fair Philippines*, Silverlens, Manila

## HANNA PETTYJOHN

### Bio

- 2013 *Art Taipei*, Silverlens, Taipei  
*Art Fair Philippines*, Silverlens, Manila  
*Ley Hunting Pt. 2*, curated by Gary-Ross Pastrana, Silverlens, Singapore
- 2012 *Ley Hunting Pt. 1*, Silverlens, Manila
- 2011 *Nothing to Declare*, Yuchengco Museum, Makati City  
*Pulse Miami*, Silverlens, Manila  
*Manilart11*, Silverlens, Manila  
*Art HK 11*, Silverlens, Hong Kong
- 2010 *Cube*, curated by Nilo Ilarde, Finale Art File, Manila  
*ManilArt 10*, Silverlens, Manila
- 2009 *Pulse Miami*, Silverlens, Miami  
*Sungdu-an 5, Daloy Ng Dulong*, National Museum of the Philippines, Manila
- 2008 *Inaugural Show*, Finale Art File, Manila
- 2007 *Land*, Galeria Duemila, Pasay City
- 2005 *Doit*, curated by Nestor Vinluan, Magnet, Quezon City  
*Project:Tracings*, Cultural Center of the Philippines, Manila
- 2004 *Feat of Clay*, with Aba Lluch Dalena, Gallery 139, Manila  
*Shell National Student Art Competition*, Mandaluyong City
- 2003 *Dei*, curated by Honrado Fernandez, GSIS Museum of Fine Arts, Manila  
*Box Environment*, curated by Nestor Vinluan, Ayala Museum, Makati City

### EDUCATION

- 2005 University of the Philippines College of Fine Arts  
Diliman, Quezon City, Philippines  
BFA Painting



**SILVERLENS**

IN MEDIAS RES  
HANNA PETTYJOHN

[inquire](#)

[book an appointment](#)

[visit website](#)

5 TO 23 DECEMBER 2020

### **HANNA PETTYJOHN**

Copyright © 2020 Silverlens Inc.

All rights reserved.

No part of this publication may be reproduced, stored in a retrieval system or transmitted in any form or by any means, electronic or otherwise, without the prior written consent of the above mentioned copyright holders, with the exception of brief excerpts and quotations used in articles, critical essays or research.

### **KARLA GARCÍA**

Text © Silverlens Inc. 2020

All rights reserved.

No part of this essay may be reproduced, modified, or stored in a retrieval system or retransmission, in any form or by any means, for reasons other than personal use, without written permission from the author.

# **SILVERLENS**

2263 Don Chino Roces Avenue Extension

Makati City, Philippines 1231

T +632.88160044

F +632.881044

M +63917.5874011

[www.silverlensgalleries.com](http://www.silverlensgalleries.com)

[info@silverlensgalleries.com](mailto:info@silverlensgalleries.com)